

Using Presets

05 August 2005

What is a Preset?

A Preset is a special feature that enables users to save all of the job property settings for a common type of job and reapply them in a single step. The settings that are saved are from the Layout, Workflow, Color Management, Printer Options, Labels, Color Adjust and Separations tabs. Presets are applied using the Presets list on the Color Management tab of the Job Properties dialog.

A unique file format makes it easy to share Presets between systems and other users via PTF file (Preset Transfer File). The PTF file holds several files associated with a specific print mode of your printer. This file contains all important Output Profile information: ICC profile, linearization table and XML file. To ensure optimum performance from the output profile, the PTF file also contains select output settings.

Why use a Preset?

First, the advantage of a Preset is the ability for users to link an Output Profile with specific printing conditions. Since changing any one of the printer settings (temperature, number of passes or dot type) can influence the print, we want to ensure the same settings are used as when the ICC profile was created.

Additionally, Presets are very efficient for transferring information from one computer to the other, as a single file, for quick and easy configuration of a printer.

NOTE: A Preset can also be used as a very efficient Trouble Shooting Tool.

How to Import a Preset

Importing a Preset makes it very easy to install new Output Profiles, Media and Printer Configurations from the Scanvec Amiable website or from other users.

1. Click on the FILE menu and select IMPORT PRESET
2. Browse to the location of the PTF (Preset) file or CTF file
3. Highlight the desired Preset and click the OPEN button
4. The PTF file will automatically appear in the Preset list and add the media and ICC information into the correct locations within your application

NOTE: If you import the older style CFT file, you need to select the printer setup you want to import it to first. After importing, it is recommended you save a new Preset which contains the information of the CFT file.

How to Use a Preset

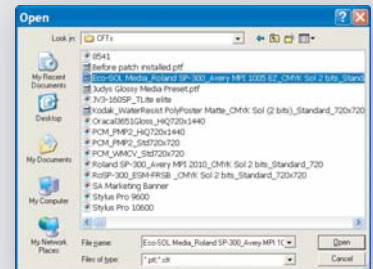
Using a Preset makes it easy to select common output configurations.

1. Double click a job in the queue to open the Job Properties window
2. Click on the COLOR MANAGEMENT tab
3. From the PRESET drop down menu, or under the PRESET button, choose the Preset you want to use - All the settings included in the Preset will automatically apply

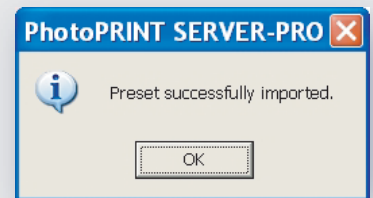


Judys Glossy Media Preset.ptf

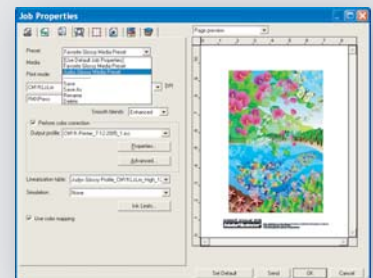
PTF File



Import Preset

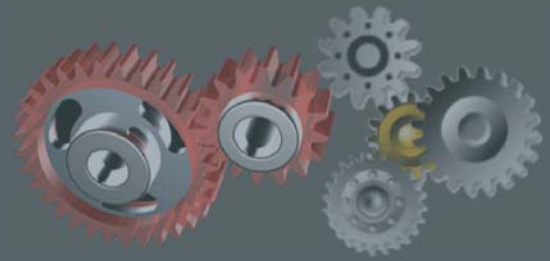


Import Successful



Select Preset





Using Presets

05 August 2005

How to Create a Preset

The ability to Create a Preset makes it very easy to automate most of the output settings a user uses often, linking favorite settings together.

NOTE: The ability to Create a Preset is available in PhotoPRINT SERVER-PRO, SERVER, DX and FlexiSIGN-PRO.

1. Double click on a job in the HOLD queue to open Job Properties window
2. Set the options on the LAYOUT tab as you would like them configured
3. Configure any options on the WORKFLOW tab
4. Set your options on the PRINTER OPTIONS tab
- NOTE:** Settings from the TILE / PANEL tab will not be included in a Preset
5. Configure any options you want on the LABELS / MARKS tab
6. Set any options you need on COLOR ADJUSTMENT tab
7. Make the selections you want on the COLOR SEPARATIONS tab
8. Select the COLOR MANAGEMENT tab and set all your color options
9. From the drop down PRESET list, choose SAVE AS PRESET
10. In the SAVE PRESET window, check the features you want to include in the Preset
11. Click the OK button
12. Type the name for your new Preset and click the OK button

You have defined a new Preset that can be used to quickly set printing options and can also be Exported to share with other users.

How to Export a Preset

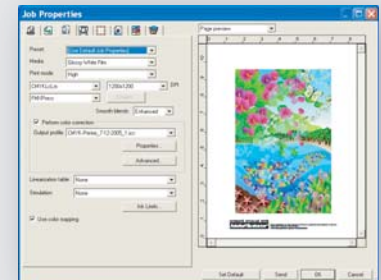
The ability to Export a Preset makes it very easy to share Output Profiles, Media and Printer Configurations with other PhotoPRINT and FlexiSIGN-PRO users.

NOTE: The ability to Export a Preset is available in PhotoPRINT SERVER, SERVER-PRO and FlexiSIGN-PRO.

1. Click the FILE menu and select EXPORT PRESET
2. From the drop down list choose the printer you would like to export the Preset to
3. Highlight the presets that you want to export from the list of presets which are linked with this specific printer
4. Press on EXPORT button
5. Select the location where you would like to save the PTF file and click OK

You have exported a Preset that can be shared with other systems and other users.

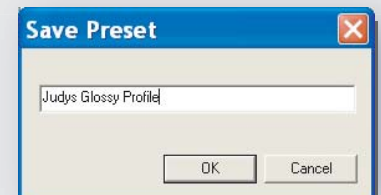
HINT: It is possible to create a Preset that cannot be edited. These Presets are called Read-Only Presets. This prevents a Preset from being accidentally changed.



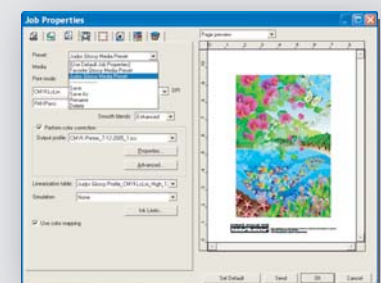
Job Properties



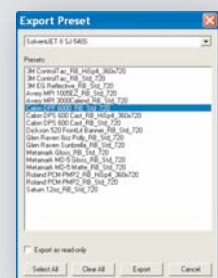
Save Preset Options



Save Preset Name



Load Preset



Export Preset

