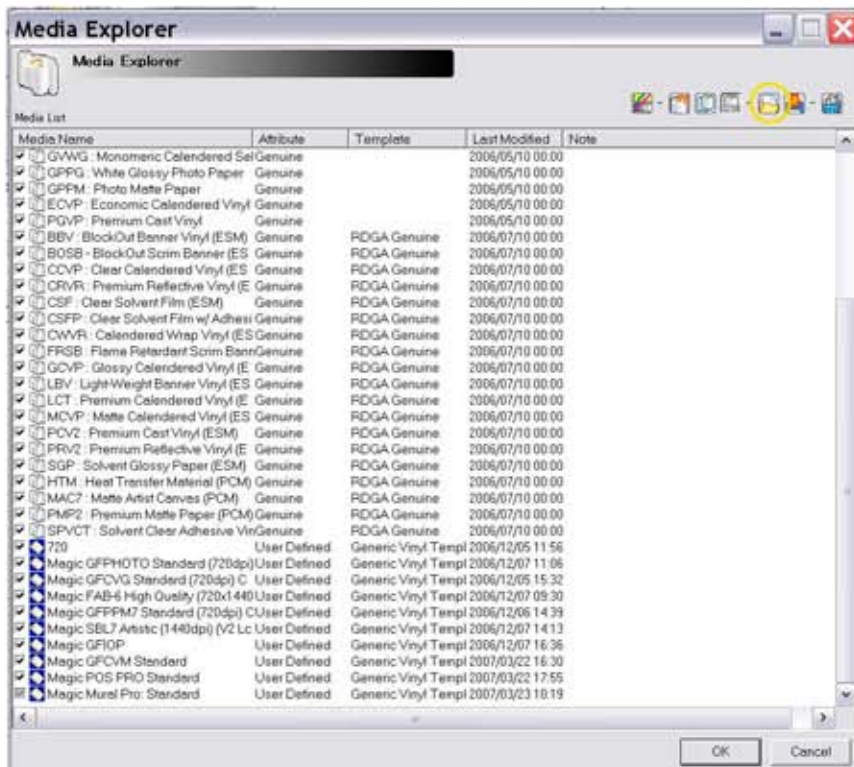


Importing Roland .rml Media Configuration Files into Roland VersaWorks

Import .rml profile:

- 1- Unzip the file you wish to use.
- 2- Open Media Explorer.
- 3- Click the “Load from File” folder icon.
- 4- Select the unzipped .rml file



-Once the .rml file is imported go to your Queue properties.

- Under the “Quality” tab, choose your media type.
- The “Print Quality” that appears is what should be used.
- Under ‘Color Management” choose “Pre-Press U.S.”.
- Click “OK” then “RIP” and “Print” your image.

