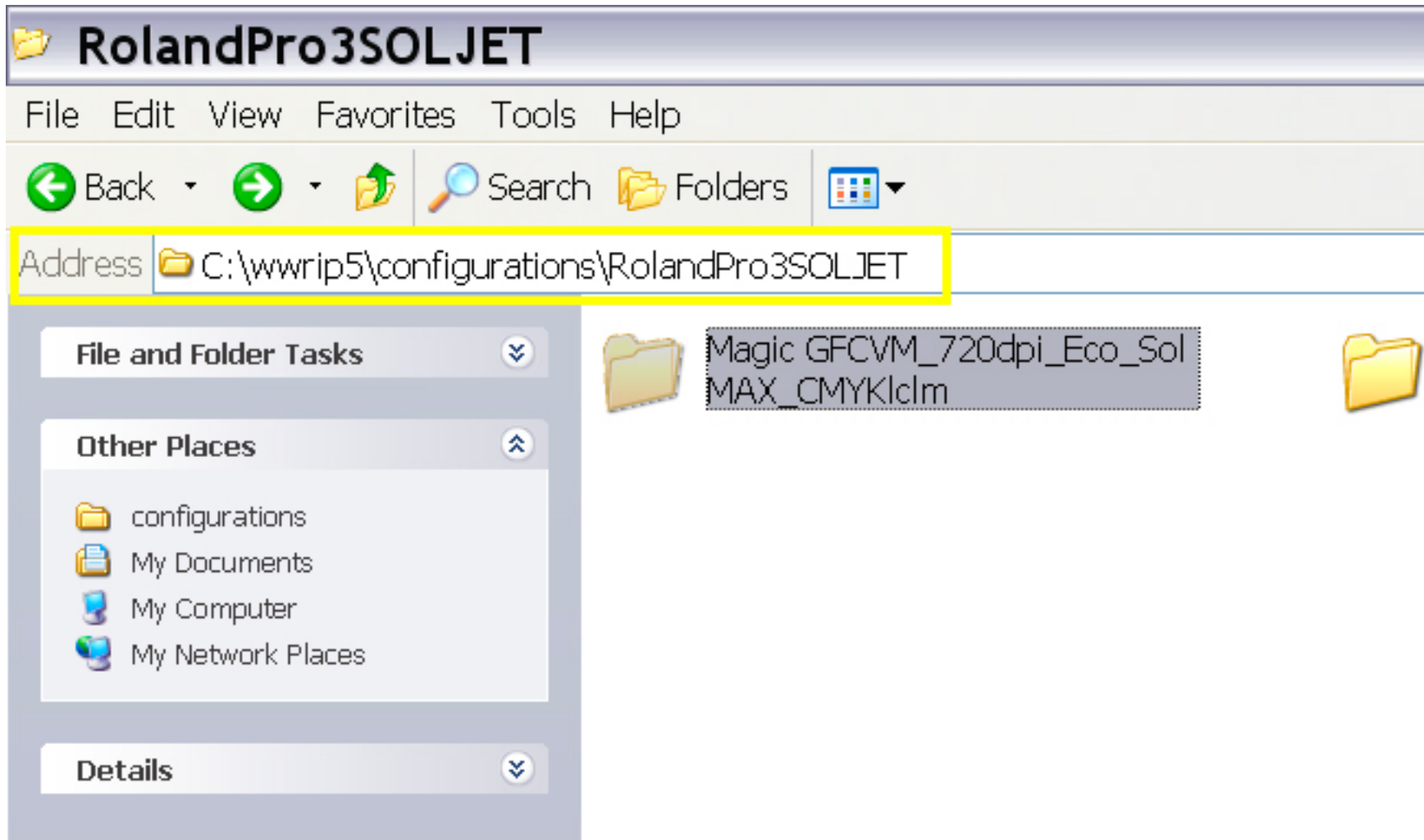
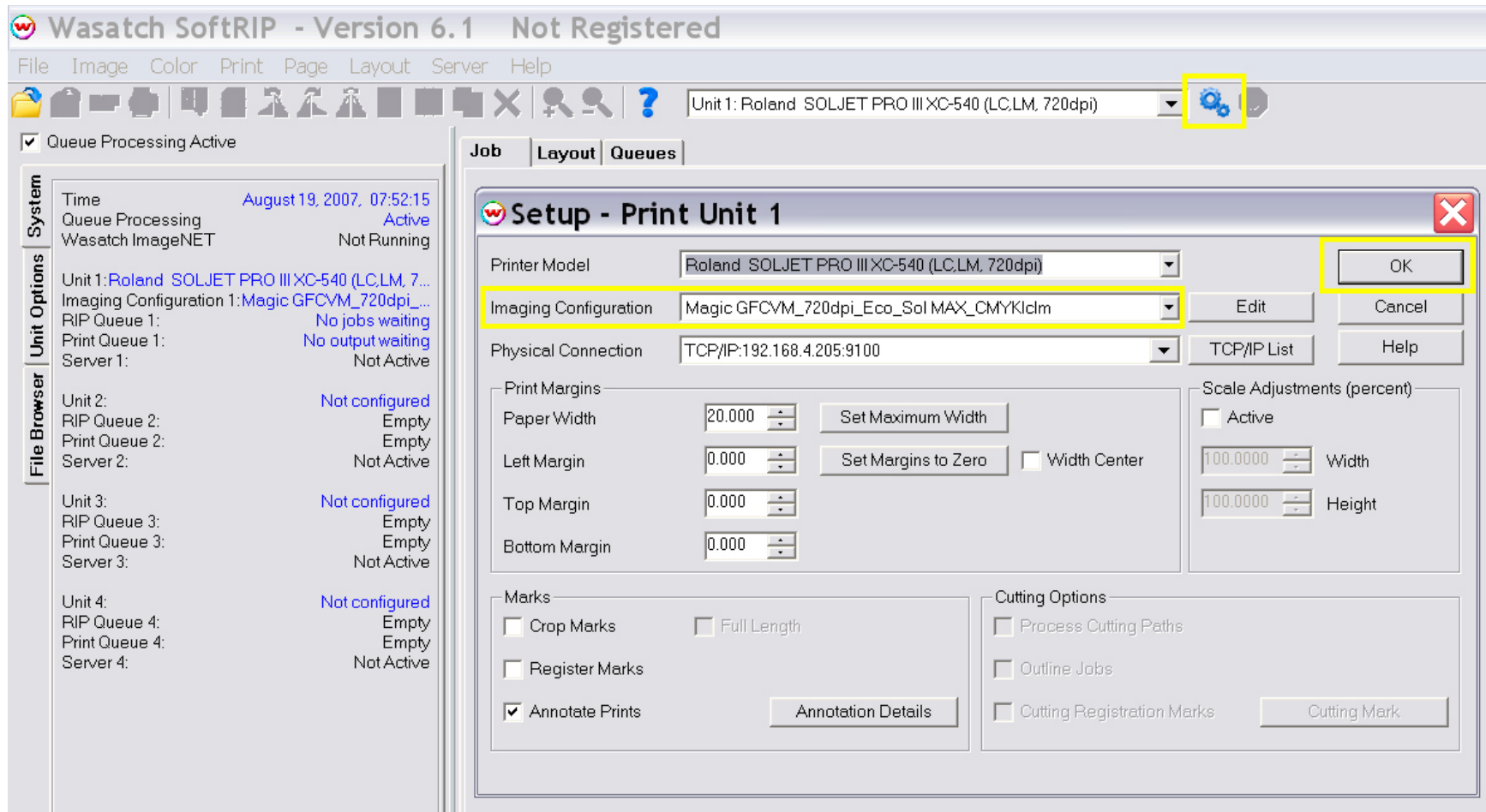


**Importing Imaging
Configurations /
Profiles
into Wasatch SoftRIP**



- 1- Locate your “wwrip5” or “wwrip6” folder.
- 2- Open the “Configurations” folder.
- 3- Open the proper “Printer” folder.
- 4- Place the “Magic Media Configuration/Profile” folder into the printer folder (step 3).



5- Launch "Wasatch SoftRIP".

6- Click the "Setup" icon or choose "Print" then "Setup".

7- Click the "Imaging Configuration" drop down menu. Find the media profile you just imported.

8- Click "OK". Open an image and print.

It is very important that you don't change any of the settings in a imaging configuration (ink levels, speed, bi-directional printing, etc.). Doing so will invalidate the ICC profile and will yield inaccurate results.